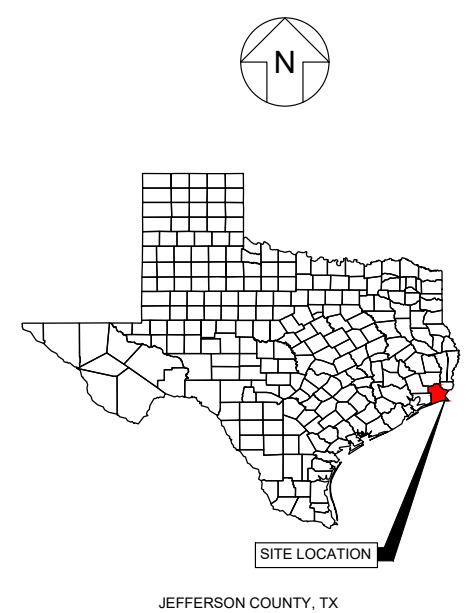


C:\USERS\NOLAND\CACDC\GEO\SYNTEC\ENERGY TX LLC_LGND TO SANDLING\PROJECT FILES\CADD\01_PERMIT (GXE 10588)\DWGS\SHEETS\GXE10588\F01



- NOTES:
1. IMAGE BASE MAP ARE USGS 7.5 MINUTE DRG QUAD MAPS OF THE BIG HILL BAYOU, PORT ACRES, PORT ARTHUR NORTH, AND PORT ARTHUR SOUTH AREA.
 2. COORDINATE SYSTEM: STATE PLANE NAD83 (2011), US FOOT, TEXAS SOUTH ZONE 4205.



VICINITY MAP LEGEND 230KV SUBSTATION EXPANSION ENTERGY TEXAS INC JEFFERSON COUNTY, TEXAS	
	FIGURE 1
PROJECT NO: GXE10588	JULY 2025



LEGEND

	EXISTING GROUND ELEVATION (FT.MSL)
	LIMIT OF DISTURBANCE
	PROPOSED SUBSTATION PAD
	PROPOSED SUBSTATION AREA FENCING
	PROPOSED GROUND ELEVATION (FT.MSL)
	PEM WETLANDS IMPACTED WITHIN LOD - 1.49 AC (APPROX)
	PSS WETLANDS IMPACTED WITHIN LOD - 3.63 AC (APPROX)
	UNIMPACTED WETLANDS OUTSIDE OF LOD
	CANALS IMPACTED WITHIN LOD - 0.08 AC (APPROX)
	EXISTING SUBSTATION PAD AND ROADWAY AREA

NOTES:

- COORDINATE SYSTEM: STATE PLANE NAD83 (2011), US FOOT, TEXAS SOUTH ZONE 4205.
- TOPOGRAPHY AND PROPOSED SUBSTATION PROVIDED BY ENTERGY TEXAS INC.
- TOTAL WETLANDS PERMANENTLY IMPACTED = 5.12 ACRES, CONSISTING OF 1.49 ACRES PEM AND 3.63 ACRES PSS.
- TOTAL ACREAGE OF PROPOSED PAD AREA = 8.27 AC, CONSISTING OF 5.07 AC FOR THE SUBSTATION PAD EXPANSION AND 3.20 AC FOR THE ENTRANCE AND PARKING AREA.
- TOTAL FILL VOLUME OF PROPOSED PAD AREA = 32,300 CY, CONSISTING OF 15,700 CY FOR THE SUBSTATION PAD EXPANSION AND 16,600 CY FOR THE ENTRANCE AND PARKING AREA.
- DREDGED MATERIAL FROM CONSTRUCTION OF NEW CANAL WILL BE REPURPOSED AS ON-SITE FILL MATERIAL FOR PAD DEVELOPMENT.



**SUBSTATION PAD LAYOUT
LEGEND 230KV SUBSTATION EXPANSION
ENTERGY TEXAS INC
JEFFERSON COUNTY, TEXAS**



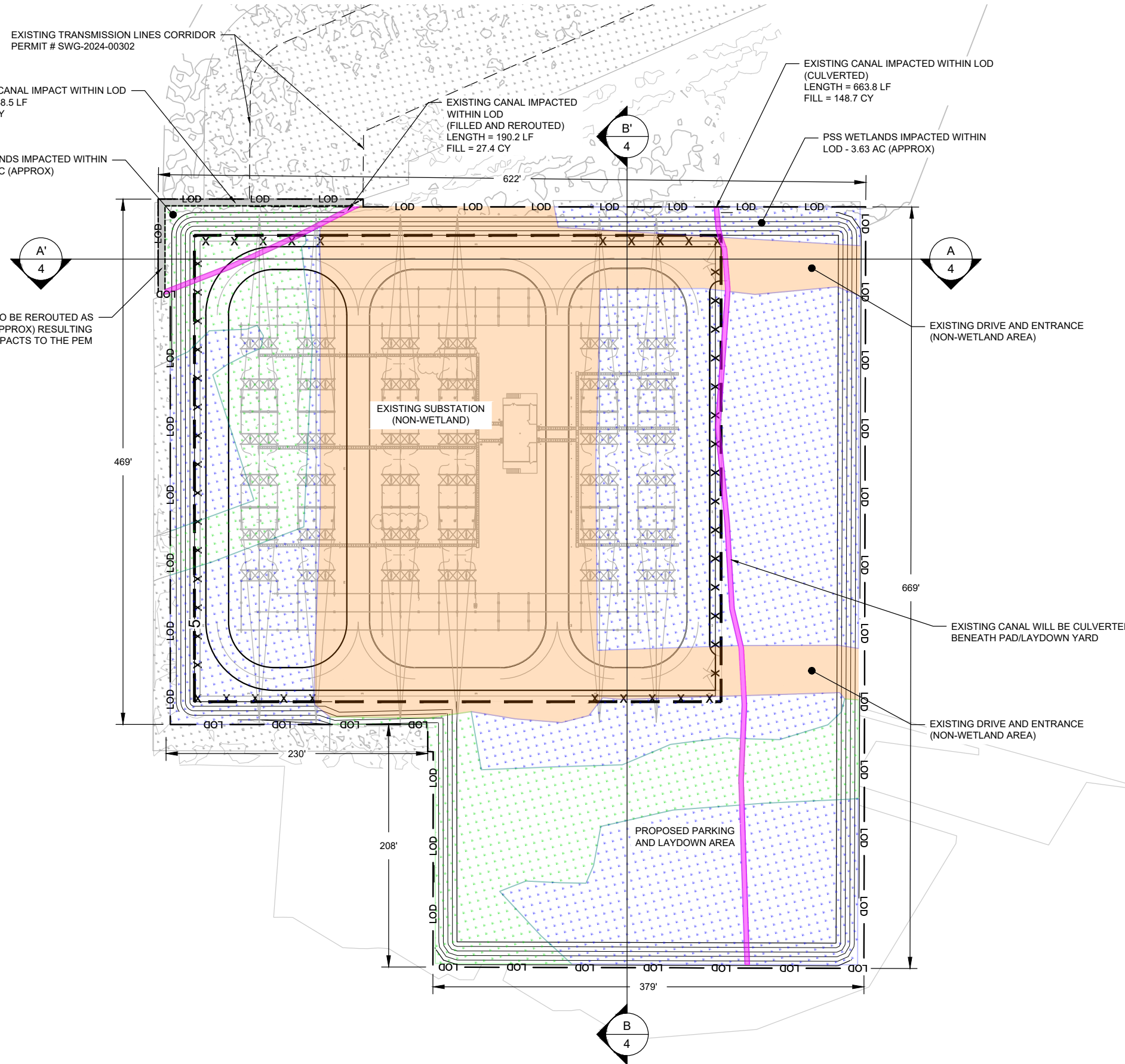
FIGURE

2

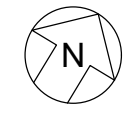
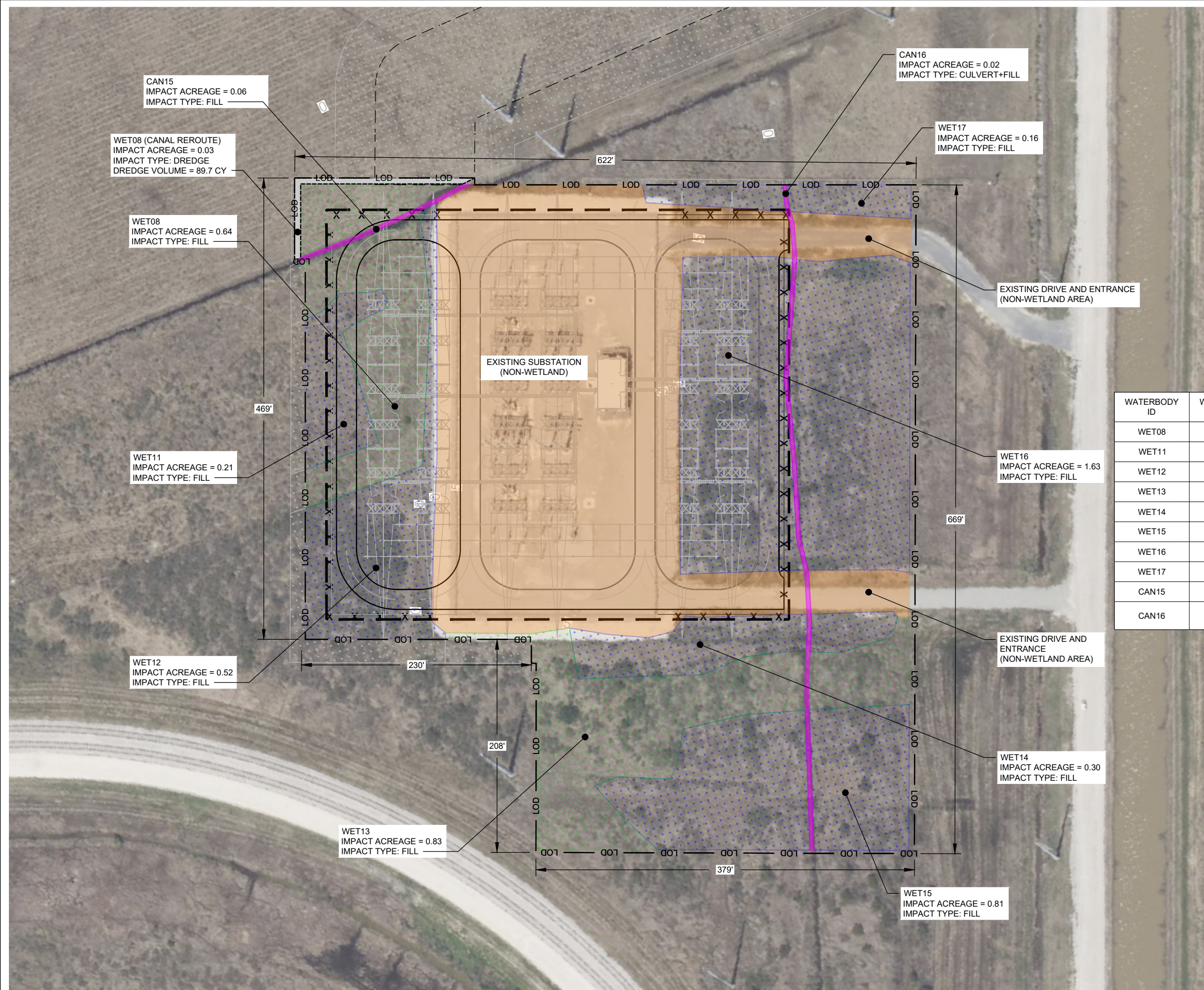
PROJECT NO: GXE10588

JULY 2025

C:\USERS\MNOLAND\DCI\ACCDOS\GEO\SYNTEC\ENTERGY.TX.LLC_LGND TO SANDLING\PROJECT FILES\CADD\01_PERMIT (GXE10588)\DWGS\SHEETS\GXE10588\F02



C:\USERS\M\LAND\DCI\ACCDOS\GEO\SYNTEC\ENERGY\TX\LLC_LGND TO SANDLING\PROJECT FILES\CADD\01_PERMIT (GXE10588)\DWGS\SHEETS\GXE10588F04



LEGEND

- 0 EXISTING GROUND ELEVATION (FT,MSL)
- LOD LIMIT OF DISTURBANCE
- PROPOSED SUBSTATION PAD
- PROPOSED SUBSTATION AREA FENCING
- 5 PROPOSED GROUND ELEVATION (FT,MSL)
- PEM WETLANDS IMPACTED WITHIN LOD - 1.49 AC (APPROX)
- PSS WETLANDS IMPACTED WITHIN LOD - 3.63 AC (APPROX)
- UNIMPACTED WETLANDS OUTSIDE OF LOD
- CANALS IMPACTED WITHIN LOD - 0.08 AC (APPROX)
- EXISTING SUBSTATION PAD AND ROADWAY AREA

WATERBODY ID	WATERBODY TYPE	TOTAL ACREAGE	PERMANENT IMPACTS	NO IMPACTS	IMPACT DESCRIPTION
WET08	PEM	0.7	0.67	0.04	DREDGE+FILL
WET11	PSS	0.27	0.21	0.05	FILL
WET12	PSS	0.65	0.52	0.13	FILL
WET13	PEM	0.88	0.83	0.05	FILL
WET14	PSS	0.3	0.3	0	FILL
WET15	PSS	0.81	0.81	0	FILL
WET16	PSS	1.63	1.63	0	FILL
WET17	PSS	0.19	0.16	0.03	FILL
CAN15	CANAL	0.06	0.06	0	FILL
CAN16	CANAL	0.02	0.02	0	CULVERT + FILL

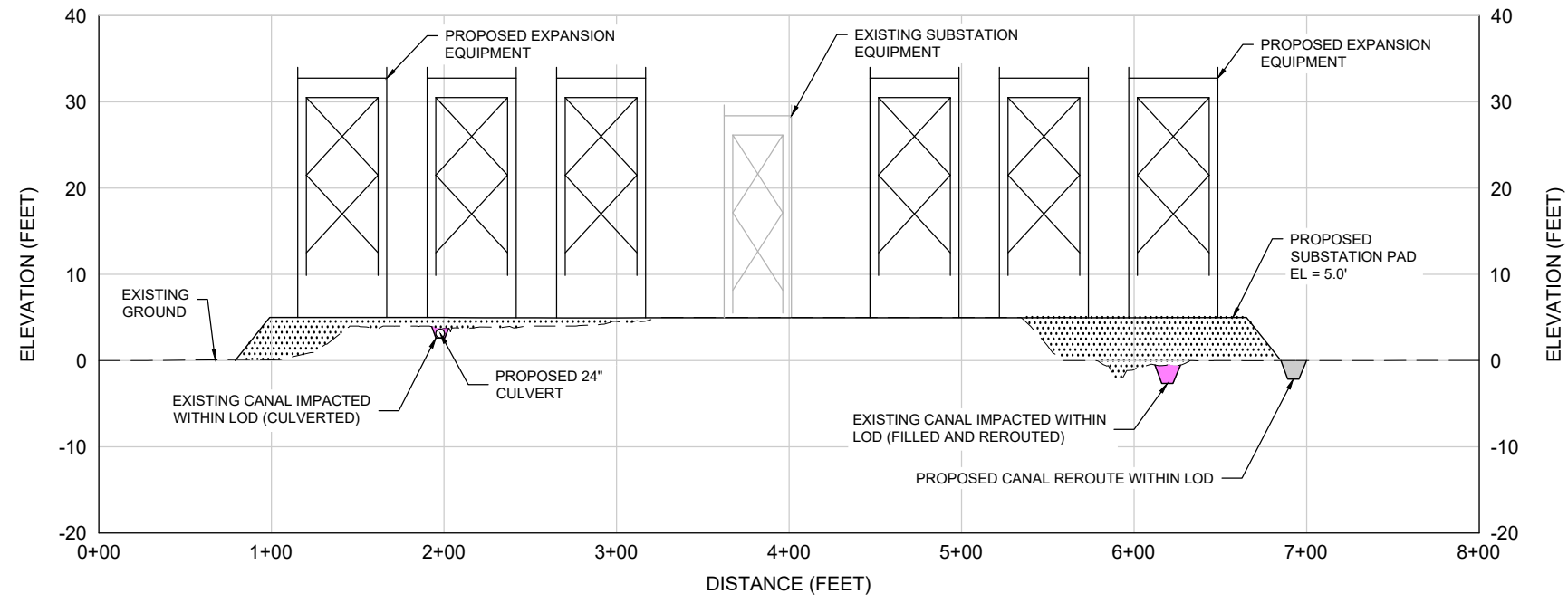


**WETLANDS IMPACT MAP
LEGEND 230KV SUBSTATION EXPANSION
ENTERGY TEXAS INC
JEFFERSON COUNTY, TEXAS**

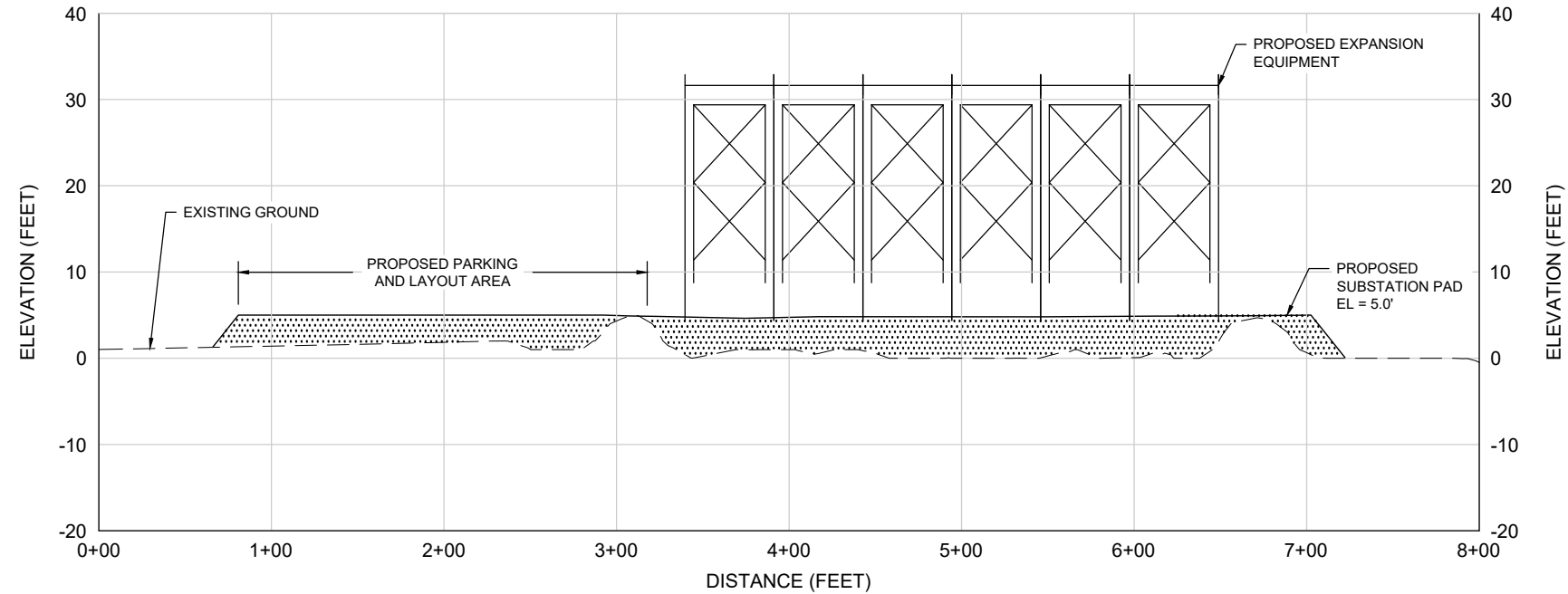
FIGURE
3

PROJECT NO: GXE10588

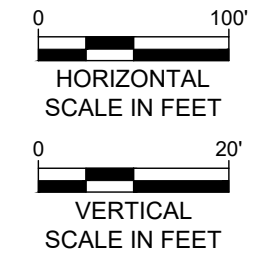
JULY 2025



A-A'
 SECTION
 2 SUBSTATION PAD AREA



B-B'
 SECTION
 2 SUBSTATION PAD AREA



NOTES:

1. TOTAL FILL VOLUME OF PROPOSED PAD AREA = 32,300 CY, CONSISTING OF 15,700 CY FOR THE SUBSTATION PAD AND 16,600 CY FOR THE ENTRANCE AND PARKING AREA.
2. ALL SUBSTATION EQUIPMENT IS SHOWN FOR REFERENCE PURPOSES AND ARE NOT DRAWN TO SCALE.

SUBSTATION SECTIONS LEGEND 230KV SUBSTATION EXPANSION ENTERGY TEXAS INC JEFFERSON COUNTY, TEXAS	
	FIGURE 4
PROJECT NO: GXE10588	JULY 2025

C:\USERS\MNOLAND\DCI\ACCDOS\GEO\SYNTEC\ENERGY\TX\LLC_LGND TO SANDLING\PROJECT FILES\CADD\01_PERMIT (GXE10588)\DWGS\SHEETS\GXE10588F03